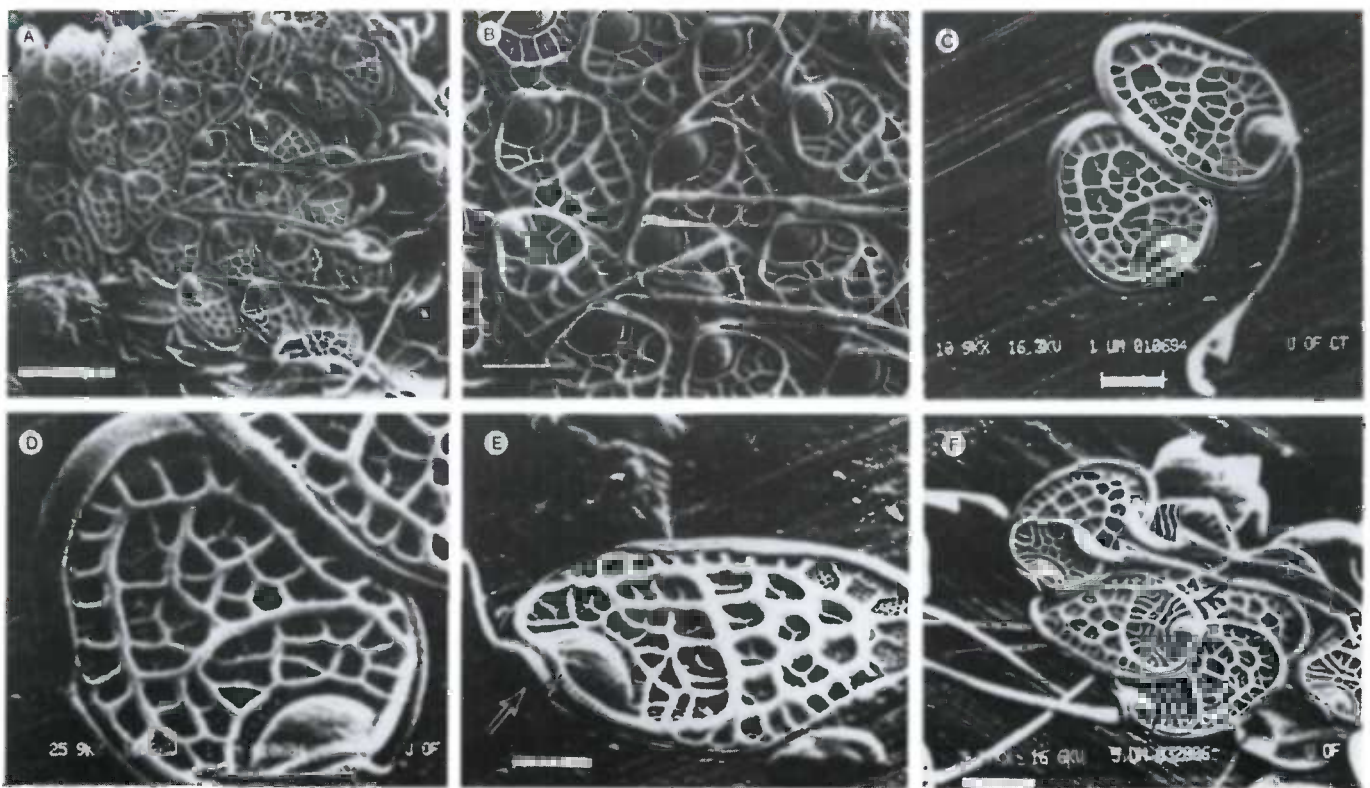


# The Fritsch Collection

Algal illustrations on microfiche



The Freshwater Biological Association, Ambleside, Cumbria, England

# The Fritsch Collection

## A unique pictorial herbarium of algal illustrations

A microfiche edition of the unique pictorial herbarium of algal illustrations, begun by the late Professor F.E. Fritsch, was published in 1964, and in 1972 an extensive supplement was added to the microfiche edition. Further supplements issued in 1978, 1982, 1987, 1992 and 1997 have brought the number of illustrations to about 512,000, originating from more than 15,000 publications.

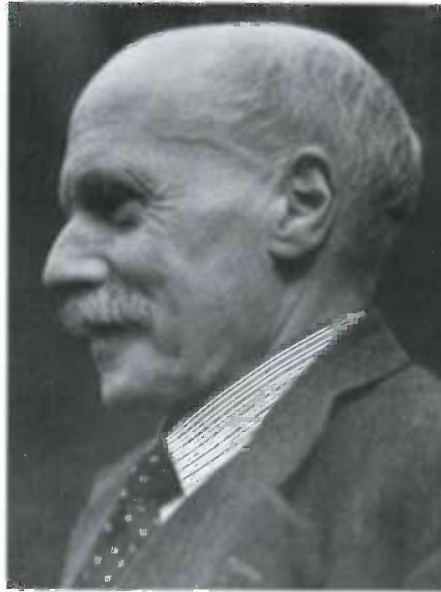
### History of the Collection

Although the value of this large pictorial herbarium is self-evident, those who use it will soon find some perhaps unexpected features. For instance, some of the pictures are not sufficiently clear, and the arrangement of illustrations of a species and its sub-specific taxa on a single sheet may seem rather haphazard. The arrangement is the result of the Collection's history: between 1912 and 1953, the late Professor F.E. Fritsch inserted illustrations in a way that suited him and made the least demands on his time and energy. After his death the collection was given, as he wished, to the Freshwater Biological Association in Ambleside, Cumbria, England. Short-term grants were then obtained for the enlargement of the collection until a permanent post was created in 1958.

Thus, the first reorganization of the collection was based on two main considerations. On the one hand, as many Figures as possible had to be entered before the financial support ceased. This situation made it necessary to reproduce published Figures, whereas Professor Fritsch had cut them out of copies of papers sent to him. If the original Figures were bad, the copies were of course worse, and very delicate or coloured pictures can be difficult to reproduce. On the other hand, the arrangement of the collection had to be as simple as possible. Moreover, in a later phase the general plan followed by Professor Fritsch had to be maintained, although it is not always the most suitable for phycologists in general.

### Arrangement of the Collection

The availability of an index means that any genus can now be found easily and quickly. The occurrence of two or more



Prof. F.E. Fritsch, F.R.S. (1879-1954)

references on a card means that the genus can be found under two or more names. The indexing of the microfiche edition was of course determined by the arrangement of the original collection: the papers were entered almost at random and no attempt was made to favour any particular group of algae although the effect of Professor Fritsch's special interest in desmids is evident. None of the Figures was omitted, since it was necessary to avoid arbitrary selection. It is often difficult to decide which illustrations accompanying a paper have taxonomic value and which do not. It is difficult to be consistent, because absolute rules cannot be formulated. No attempt was made to draw a rigid line between fresh-water and marine or brackish-water forms, and some of the larger bacteria are included, especially those belonging to species that have not yet been cultured.

In recent years original diagnoses have been entered and some taxonomic data where it seems specially desirable.

Here and there the user will find errors, either original or made by us. We hope they will be brought to our attention so that they can be corrected for future supplements.

The basic simple classification used in the original edition has not been altered in the supplements. Although changes in

algal classification are sometimes made necessary by new knowledge, the incorporation of new illustrations would be seriously delayed if the Collection were to be reorganized each time a change in classification was accepted. Thus, for example, two classes, i.e. Prymnesiophyceae (Haptophyceae) and Eustigmatophyceae, are still assigned to the Chrysophyceae and Xanthophyceae (Tribophyceae), respectively. But despite taxonomic imperfections, it has been my experience that those who use the Collection find our present simple system supported by the generic index to be satisfactory. The indexing of the Collection has recently been simplified and reorganized, as can be seen under "Finding aids".

### Assistance requested

It will be clear from this short account of the Collection that the acquisition of reprints of original papers greatly aids our work, since it makes copying unnecessary. If, therefore, phycologists can spare us offprints of their publications, we will be very grateful. Such material and all enquiries should be addressed to:

Dr. J.W.G. Lund  
Freshwater Biological Association  
The Ferry House  
Far Sawrey, Ambleside  
Cumbria LA22 0LP  
England  
Phone +44 15394 42468  
Fax +44 15394 46914  
E-mail fritsch@wpo.nerc.ac.uk

### Acknowledgements

The rapid enlargement of this unique collection has had the support of the Council of the Freshwater Biological Association and the Natural Environment Research Council, Swindon.

*J.W.G. Lund*  
Honorary Curator  
Freshwater Biological Association

## Finding aids

### Index in printed form

A cumulative printed alphabetical genus index with references to the microfiche numbers makes it easy to use this great collection. We are indebted for this important improvement to Prof. Pertti Eloranta (Department of Limnology and Environmental Protection, University of Helsinki, Finland), who took the initiative and himself inserted all of the illustrations into the computer, including those of the latest supplement. The result is a 96-page alphabetic index in printed form which is supplied free with the microfiche collection. Future supplements can be integrated easily, thus providing a cumulative index.

### Index on microfiche

A genus index and an alphabetical card index of author-names (for each part of the collection separately) are available on microfiche.

## The collection arranged in classes

For those customers who are only interested in parts of the collection, Prof. Eloranta made a subdivision by class.

	Number of fiche
Bacillariophyceae	766
Bacteria	14
Chlorarachniophyceae	2
Chloromonadophyceae	8
Chlorophyceae (except desmids)	726
Chlorophyceae / desmids	499
Chrysophyceae	134
Colourless Flagellates	37
Cryptophyceae	25
Cyanophyceae (Cyanobacteria)	323
Dinophyceae	65
Euglenophyceae	160
Phaeophyceae	7
Rhodophyceae	35
Xanthophyceae (incl. Eustigmatophyceae)	78
Incertae Sedis	16

## Price and other information

	Basic collection	1964	NLG 10,638
	Supplement I	1972	NLG 7,767
	Supplement II	1978	NLG 2,799
	Supplement III	1982	NLG 1,782
	Supplement IV	1987	NLG 1,782
	Supplement V	1992	NLG 1,683
	Supplement VI	1997	NLG 2,670
Order number	5211/2/1		
Scope	Approx. 512,000 illustrations of algae		
Number of fiche	3,002		
Size of fiche	90 x 120 mm (Basic Coll. and Supp. I) 105 x 148 mm (Supp. II-VI)		
Film type	Positive silver halide		
Reduction ratio	1 : 18		
Internal finding aids	Eye-legible headers on each fiche with title and generic names		
External finding aids	<ul style="list-style-type: none"><li>• author and genus index on microfiche in a practical plastic binder (comes free with microfiche collection)</li><li>• printed cumulative alphabetical genus index of 96 pages (comes free with microfiche collection)</li></ul>		

**A standing order can be placed for the subsequent stages of the project.**